

	RN1106-812	POLEA CIGUEÑAL 7PK 151MM DUSTER 2.0 16V 08/20, MEGANE/SCENIC 2.0 16V
	RN1106-801	POLEA CIGUEÑAL 135 Ø155X26 6PK - ACCESORIOS DUSTER 1.6 16V 08/20, LOGAN/SANDERO/STEP 1.6 16V 08/20
	RN1106-802	POLEA CIGUEÑAL Ø156X26 6PK - ACCESORIOS LOGAN/SAND 1.6 8V 15/20
	RN1106-800	POLEA CIGUEÑAL Ø156X26 6PK - ACCESORIOS LOGAN/SAND 1.6 8V 15/20
	RN1106-850	POLEA BOMBA DIRECCION HIDRAULICA 6PK - ACCESORIOS DUSTER K4M 1.6 08/20, LOGAN/SAND 1.6 16V 07/20, MEGANE/SCE/CLIO/SYM/KANG 1.6 16V
	RN1103-551	PIÑON DISTRIBUCION ARBOL LEVAS 38D DUSTER 1.6 16V 08/20, LOGAN/SAND/STEP 1.6 16V 07/20, MEGANE/SCE/CLIO/SYM/KANG 1.6 16V
	RN1103-511	PIÑON DISTRIBUCION ARBOL LEVAS 38D LOGAN/SAND 1.6 8V 07/20, CLIO/SYM/KANG 1.6 8V, TWINGO
	RN1103-408	PIÑON CIGUEÑAL 19D CON PESTAÑA LOGAN/SAND 1.6 8V 12/20
	RN1104-122	PIÑON BOMBA ACEITE 22D (CONEX CADENA BOMBA ACEITE) DUSTER 1.6 16V 08/20, LOGAN/SAND/STEP 07/20, MEGANE/SCE/CLIO/SYM/KANG, TWINGO
	RN1105-103	CADENA BOMBA ACEITE 21P DUSTER 1.6 16V 08/20, LOGAN/SAND/STEP 07/20, MEGANE/SCE/CLIO/SYM/KANG, TWINGO
	PG2203-201	GUIA MOTRIZ 206, 306, PARTNER, 307, BERLINGO, XSARA, C3, C4, C-ELYSEE



RN2203-205

ANILLO SINCRONIZADOR BRONCE 18d 3pines 1ª 2ª 3ª 4ª 5ª

RENAULT TODOS



RN3310-091

BUJE ARBOL TRANSMISION

MEGANE/SCE/CLIO/SYM/KANG K4M 1.6-1.4 16V



RN1108-530

SETS SELLOS VALVULAS

DUSTER 1.6-2.0 08/20, LOGAN/SAND/STEP 1.6 16V 07/20,
MEGANE/SCE/CLIO/SYM/KANG 1.6 16V



RN1108-502

SETS SELLOS VALVULAS

LOGAN/SAND 1.6 8V 07/20, CLIO/SYM/KANG 1.6 8V



RN1108-555

SETS SELLOS VALVULAS

TWINGO D4F 1.2 16V



RN1108-556

SETS SELLOS VALVULAS

TWINGO D4F 1.2 16V



RN1108-551

SETS SELLOS VALVULAS

TWINGO D7F 1.2 8V



RN1108-550

SETS SELLOS VALVULAS

TWINGO D7F 1.2 8V



PG1108-530

SETS SELLOS VALVULAS

207, 308, PARTNER, 3008, 5008, C4, BERLINGO, DS3, DS4



RN2203-112

RETEN CONTROL CAMBIOS PRECIO X UNID CAJA X5PCS

DUSTER 1.6, LOGAN/SAND/STEP, MEGANE/SCEN, CLIO/SYM/KANG



RN1108-630

RETEN CIGUEÑAL DELANTERO Ø35X47MM 17MM

DUSTER 1.6 16V 08/20, LOGAN/SAND/STEP 1.6 16V 07/20,
MEGANE/SCE/CLIO/KANG 1.6 16V

	RN1108-629	RETEN CIGUEÑAL DELANTERO Ø35X47MM ±7MM DUSTER 1.6 16V 08/20, LOGAN/SAND/STEP 1.6 16V 07/20, MEGANE/SCE/CLIO/KANG 1.6 16V
	RN1108-633	RETEN CIGUEÑAL DELANTERO Ø32X44MM ±6MM TWINGO
	RN1108-645	RETEN CIGUEÑAL POST Ø84X117MM ±7.5MM DUSTER 1.6 16VCAD 20/22, LOGAN/SAND/STEP 1.6 16VCAD 20/22, CAPTUR 1.6 16VCAD
	RN1108-648	RETEN CIGUEÑAL POSTERIOR Ø80X100MM ±8MM DUSTER 1.6 16V 08/20, LOGAN/SAND/STEP 1.6 16V 07/20, MEGANE/SCE/CLIO/SYM/KANG 1.6 16V
	RN1108-636	RETEN CIGUEÑAL POSTERIOR Ø80X100MM ±8MM DUSTER 1.6 16V 08/20, LOGAN/SAND/STEP 1.6 16V 07/20, MEGANE/SCE/CLIO/SYM/KANG 1.6 16V
	RN1108-647	RETEN CIGUEÑAL POSTERIOR Ø70X86MM ±8MM TWINGO D7F 1.2 8V
	RN1108-639	RETEN ARBOL LEVAS Ø28X47MM ±5MM DUSTER 2.0 16V 08/20, MEGANE/SCE 2.0 16V
	RN1108-620	RETEN ARBOL LEVAS Ø28X42MM ±5MM DUSTER 1.6 16V 08/20, LOGAN/SAND/STEP 1.6-1.4 16V 07/20, MEGANE/SCE/CLIO/SYM/KANG 1.6-1.4 16V
	RN1108-621	RETEN ARBOL LEVAS Ø28X42MM ±5MM DUSTER 1.6 16V 08/20, LOGAN/SAND/STEP 1.6-1.4 16V 07/20, MEGANE/SCE/CLIO/SYM/KANG 1.6-1.4 16V
	RN2203-116	RETEN SEMI-EJE DIFERENCIAL Ø55X33 ±8/13MM DUSTER 1.6 16VCAD 20/22, LOGAN/SAND/STEP 1.6 16VCAD 20/22, CAPTUR 1.6 16VCAD
	RN2203-106	RETEN SEMI-EJE DIFERENCIAL Ø51X35MM ±9MM DUSTER 2.0 16V 4X4 08/20

	RN2203-105	RETEN SEMI-EJE DIFERENCIAL Ø55X40MM ±8MM DUSTER 1.6 16V 08/20, LOGAN/SAND/STEP 1.6 16V 07/20, MEGANE/SCE/CLIO/SYM/KANG 1.6 16V
	RN2203-107	RETEN SEMI-EJE DIFERENCIAL Ø55X40MM ±8MM DUSTER 1.6 16V 08/20, LOGAN/SAND/STEP 1.6 16V 07/20, MEGANE/SCE/CLIO/SYM/KANG 1.6 16V
	RN2203-100	RETEN SEMI-EJE DIFERENCIAL Ø56X27.9MM ±10MM LOGAN/SAND 08/20, MEGANE/SCEN/CLIO/SYM/KANG 1.6 16V
	PG2203-310	RETEN CAJA CAMBIOS 23x15x4 Berlingo, C2, C3, C4, C5, Xsara, 206, 207, 406, 407, 607, Partner, 1007
	PG2203-315	RETEN CAJA CAMBIOS 50x39x7 307, 308, 407, 408, Expert, C4, C5, Jumpy
	PG1108-635	RETEN CIGUEÑAL DELANTERO 42x66x7 Berlingo, C-Elysee, Xsara, C2, C3, C4, 106, 205, 206, 207, 306, 307, 308, 309, Partner, 1007
	PG1108-637	RETEN CIGUEÑAL DELANTERO 40x55x6,4 Berlingo, C-Elysee, C1, C2, C3, C4, C5, DS3, DS4, Jumpy, Xsara, 107, 206, 207, 307, 308, 406, 407, 408, Partner, 1007, 2008, 3008, 4008, 5008
	PG1108-105	RETEN CIGUEÑAL POSTERIOR 85x105x8 Berlingo, C-Elysee, C2, C3, C4, C5, DS3, DS4, Jumpy, Xsara, 106, 205, 206, 207, 208, 306, 307, 308, 405, 1007, 2008, 3008, 5008, Partner
	PG1108-110	RETEN CIGUEÑAL POSTERIOR 90x110x7 206, 207- 307, 308, 406, 407 -607, 3008
	PG1108-625	RETEN ARBOL LEVAS 38x50x7 Berlingo, C2, C3, C4, C5, Xsara, 207, 406, 407, 607, Partner, 1007
	MB2203-315	RETEN CAJA CAMBIOS 115x95x13 MERCEDES BENZ VARIOS

	RN1108-713	TAPON SUPERIOR TAPA DEL CABEZOTE Ø63.2MM ±6MM DUSTER 1.6 16V 08/20, LOGAN/SAND/STEP 1.6 16V 07/20, MEGANE/SCE/CLIO/SYM/KANG 1.6 16V
	RN1108-705	TAPON SUPERIOR TAPA DEL CABEZOTE Ø63.2MM ±6MM DUSTER 1.6 16V 08/20, LOGAN/SAND/STEP 1.6 16V 07/20, MEGANE/SCE/CLIO/SYM/KANG 1.6 16V
	RN1108-708	TAPON SUPERIOR TAPA DEL CABEZOTE Ø63.2MM ±6MM DUSTER 1.6 16V 08/20, LOGAN/SAND/STEP 1.6 16V 07/20, MEGANE/SCE/CLIO/SYM/KANG 1.6 16V
	RN1108-710	KIT TAPONES CULATA GDE & PEQ 57*10,5/42,5*9 DUSTER 1.6 16V 08/20, LOGAN/SAND/STEP 1.6 16V 07/20, MEGANE/SCE/CLIO/SYM/KANG 1.6 16V
	RN1108-716	KIT TAPONES CULATA GDE & PEQ 57*10,5/42,5*9 DUSTER 1.6 16V 08/20, LOGAN/SAND/STEP 1.6 16V 07/20, MEGANE/SCE/CLIO/SYM/KANG 1.6 16V
	RN3307-115	KIT EMBRAGUE Ø215MM 26D PARA COLLARIN HIDRAULICO (DISCO + PLATO) DUSTER 1.6 16V 15/20, LOGAN/SAND/STEP 1.6 16V 15/20
	RN3307-116	KIT EMBRAGUE Ø215MM 26D PARA COLLARIN HIDRAULICO (DISCO + PLATO) DUSTER 1.6 16V 15/20, LOGAN/SAND/STEP 1.6 16V 15/20
	RN3307-117	KIT EMBRAGUE Ø200MM 26D PARA COLLARIN HIDRAULICO (DISCO + PLATO) DUSTER 1.6 16V 08/15, LOGAN/SAND/STEP 1.6 16V 07/15
	RN3307-108	KIT EMBRAGUE Ø200MM 26D PARA RODAMIENTO EMBRAGUE (DISCO + PLATO) LOGAN/SAND 1.6 8V 07/15, MEGANE/SCE/CLIO/SYM/KANG 1.6 16V
	RN3307-105	KIT EMBRAGUE Ø200MM 26D (DISCO + PLATO + RODAM) LOGAN/SAND 1.6 8V 07/15, MEGANE/SCE/CLIO/SYM/KANG 1.6 16V
	RN3307-101	KIT EMBRAGUE Ø180MM 26D (DISCO & PLATO) LOGAN 1.4 07/12, MEGANE 1.4, CLIO/SYMBOL/KANGOO 1.4, TWINGO 1.2



RN3307-209

RECEPTOR EMBRAGUE (COLLARIN HIDRAULICO) SIN PESTAÑA
RENAULT DUSTER 2.0 16V 4X4 08/20



RN3307-206

RECEPTOR EMBRAGUE (COLLARIN HIDRAULICO) CON PESTAÑA
DUSTER 2.0 16V 4X2 08/20



RN3307-207

RECEPTOR EMBRAGUE (COLLARIN HIDRAULICO) SIN PESTAÑA
DUSTER 1.6 16V 4X2, ADAPT LOGAN/SAND/STEP 1.6 16V



RN3307-210

RECEPTOR EMBRAGUE (COLLARIN HIDRAULICO) SIN PESTAÑA
DUSTER 1.6 16V 4X2, ADAPT LOGAN/SAND/STEP 1.6 16V



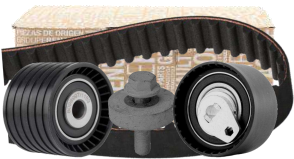
RN3307-208

RECEPTOR EMBRAGUE (COLLARIN HIDRAULICO) CON PESTAÑA
LOGAN/SAND/STEP 1.6 16V ADAPT A DUSTER 1.6 16V 4X2



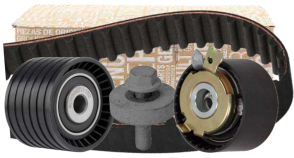
RN3307-201

RECEPTOR EMBRAGUE (RODAMIENTO)
LOGAN/SAND 1.6 8V 07/15, MEGANE/SCE 1.6 16V, CLIO/SYM/KANG



RN1106-202

KIT DISTRIBUCION (BANDA 126D + 2 TENSOSES)
DUSTER 2.0 16V 08/20, MEGANE/SCENIC 2.0 16V



RN1106-404

KIT DISTRIBUCION (BANDA 132D + 2 TENSOSES)
DUSTER 1.6 16V 08/20, LOGAN/SAND/STEP 1.6 16V 07/20,
MEGANE/SCE/CLIO/SYM/KANG 1.6 16V



RN1106-304

KIT DISTRIBUCION (BANDA 96D + 1 TENSOR + 1 TORNILLO)
LOGAN/SAND 1.6 8V 12/20, CLIO/SYMB/KANG 1.6 8V



RN1106-353

KIT DISTRIBUCION (BANDA 96D + 1 TENSOR)
LOGAN 1.4-1.6 8V 07/12



PG1106-200

KIT DISTRIBUCION 1276mm 134d (2 tensores, 1 correa) 1.6 16v
206, 207, 307, 308, PARTHNER, BERLINGO, XSARA, C2, C3, C4



PG1106-250

KIT DISTRIBUCION 991mm 104d (1 tensor, 1 correa) 1.4 8v
206, 106, 307, PARTHNER I, XSARA, C2, C3, BERLINGO



PG1106-255

KIT DISTRIBUCION 153d + TENSOR + 1 POLEA
206 2.0 02/07, 307 2.0 03/08, 407 2.2, 607 2.2



CH1106-405

KIT BANDA DISTRIBUCION BANDA 127d + 1 TENSOR
AVEO 1.6 07/18, AVEO 1.4 06/17, OPTRA 1.4



CH1106-422

KIT BANDA DISTRIBUCION BANDA 109d + 1 TENSOR
SPARK 1.0 07/18



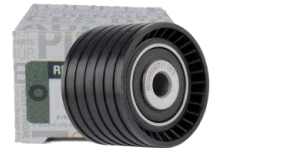
CH1106-415

KIT BANDA DISTRIBUCION BANDA 111d + 1 TENSOR
CORSA 1.6 8V, AVEO FAMILY 1.5 05/18, CHEVY 1.5 05/18



RN1106-540

TENSOR DISTRIBUCION
DUSTER 1.6 16V 08/20, LOGAN/SAND/STEP 1.6 16V 07/20,
MEGANE/SCE/CLIO/SYM/KANG 1.6 16V



RN1106-570

TENSOR PLASTICO POLEA DISTRIBUCION
DUSTER 08/20, LOGAN/SAND/STEP 1.6 16V 07/20,
MEGANE/SCE/CLIO/SYM/KANG 1.6 16V



RN1106-585

TENSOR DISTRIBUCION
TWINGO D4F 1.2 16V



CH1106-425

TENSOR DISTRIBUCION
SPARK, MATIZ



HY1106-250

TENSOR DISTRIBUCION
i10 1.1 10/16, PICANTO 1.1



RN1106-250

KIT ACCESORIOS BANDA 7PK1792 (POLEAS METALICAS)
DUSTER 2.0 16V 08/20, MEGANE/SCENIC 2.0 16V



RN1106-258

KIT ACCESORIOS BANDA 6PK1823 (TENSOR PLAST + POLEA PLAST)

DUSTER 1.6 16V 08/20, LOGAN/SAND 1.6 8V-16V 08/20



RN1106-257

KIT ACCESORIOS BANDA 6PK1823 (TENSOR PLAST + POLEA PLAST)

DUSTER 1.6 16V 08/20, LOGAN/SAND 1.6 8V-16V 08/20



RN1106-255

KIT ACCESORIOS BANDA 5PK1750 (POLEAS METALICAS)

MEGANE/SCEN 1.6 16V, CLIO/SYM/KANG 1.6 16V



RN1105-525

BANDA ALTERNADOR 7PK1792 ACCESORIOS

DUSTER 2.0 16V 08/20, MEGANE/SCENIC 2.0 16V



RN1105-527

BANDA ALTERNADOR 6PK1818 ACCESORIOS

DUSTER 1.6 16V 08/15, LOGAN/SAND 1.6 8V 08/



RN1106-180

TENSOR DINAMICO POLEA PLASTICA

DUSTER 2.0 16V 08/15



RN1106-666

POLEA LOCA METALICA 65*26.5*17 - ACCESORIOS

DUSTER 2.0 16V



RN1106-620

POLEA LOCA PLASTICA 60*25*17 KML - ACCESORIOS

LOGAN/SAND/STEP 1.6 8V-16V 07/20, DUSTER 1.6 16V 08/20, MEGANE/SCE,
CLIO/SYM/KANG, TWINGO



RN1106-615

POLEA LOCA PLASTICA 60*25*17 NTN - ACCESORIOS

LOGAN/SAND/STEP 1.6 8V-16V 07/20, DUSTER 1.6 16V 08/20, MEGANE/SCE,
CLIO/SYM/KANG, TWINGO



RN1106-603

POLEA LOCA METALICA 60*25*17 - ACCESORIOS




DUSTER 1.6 16V 08/20, LOGAN/SAND/STEP 1.6 16V



RN1106-591

TENSOR DENTADO A/C 56*21 - ACCESORIOS

TWINGO 1.2

	RN1106-590	TENSOR DENTADO A/C 56*21 - ACCESORIOS TWINGO 1.2
	RN1106-721	POLEA ALTERNADOR METALICA 6PK - ACCESORIOS DUSTER 1.6 16V 08/20, LOGAN/SAND/STEP 1.6 10/20
	RN1106-720	POLEA ALTERNADOR METALICA 6PK - ACCESORIOS DUSTER 1.6 16V 08/20, LOGAN/SAND/STEP 1.6 10/20
	CH1106-705	POLEA GUIA 6c PLASTICA 27*113x17 AVEO, OPTRA1.4
	CH1106-655	POLEA METALICA 2TAPAS pest 25*65x8 CORSA1.8, LUV2200, ASTRA
	CH1106-650	POLEA METALICA 2TAPAS pest 25*70x17 CORSA EVOLUTION
	CH1106-665	POLEA TENSORA METALICA A/C 2T 26*70x17 CORSA, CAPTIVA,
	RN1107-165	BOMBA AGUA DUSTER 2.0 16V 08/20, MEGANE/SCENIC 2.0 16V
	RN1107-163	BOMBA AGUA DUSTER K4m 1.6 16v 08/20, LOGAN/SAND/STEP 1.6 16v 07 /20, MEGANE/SCE K4m 1.6 16v, CLIO/KANG K4m 1.6 16v
	RN1107-132	BOMBA AGUA LOGAN/SAND 1.6-1.4 8V 07/20, CLIO/SYM/KANG 1.6-1.4 8V
	PG1107-160	BOMBA AGUA 16v 206 1.6 00>, 307 1.6 00>, 207 1.6 06>, 308 1.6, PARTNER 1.6 08>, BERLINGO 1.6 08>, C-ELYSEE 1.6 12>, C2/C3/C4 1.6 02>, XSARA1.6 00/05



RN1104-119

BOMBA ACEITE 22D

DUSTER 1.6 16V 08/20, LOGAN/SAND/STEP 1.6 16V 07/20, MEGANE/SCE/CLIO/SYM/KANG 1.6 16V



RN4401-010

KIT RETENES REPARACION CAJA DIRECCION BARRA *25

MEGANE1



RN3308-005

RODAMIENTO SEMI EJE DERECHO 120 Ø62X35

DUSTER 12/15



RN3308-001

RODAMIENTO SEMI EJE DERECHO 114 Ø62X35

DUSTER 1.6, LOGAN/SAND/STEP, MEGNAE/SCEN, CLIO/SYM/KANG, TWINGO



RN4404-513

PORTAMANGUETA DEL CON ABS IZQUIERDA

DUSTER 1.6-2.0 4X2



RN4404-512

PORTAMANGUETA DEL CON ABS DERECHA

DUSTER 1.6-2.0 4X2



RN4404-522

PORTAMANGUETA DEL CON ABS DERECHA

LOGAN/SAND/STEP 07/15



RN4404-523

PORTAMANGUETA DEL CON ABS IZQUIERDA

LOGAN/SAND/STEP 07/15



RN3308-304

RODAMIENTO EJE DELANTERO CON ABS 139 Ø80X42

DUSTER 08/20, CAPTUR 13/20



RN3308-210

RODAMIENTO EJE DELANTERO CON ABS 137 Ø72X37

LOGAN/SAND, MEGANE/SCEN, CLIO/SYM/KANG, TWINGO



RN3308-201

RODAMIENTO EJE DELANTERO SIN ABS 137 Ø72X37

LOGAN/SAND, MEGANE/SCEN, CLIO/SYM/KANG, TWINGO



RN3308-320

RODAMIENTO EJE POSTERIOR 143 Ø55X25

LOGAN/SAND/STEP 15/22



RN3308-325

RODAMIENTO EJE POSTERIOR 137 Ø52X25

LOGAN/SAND 07/15, MEGANE/SCEN, CLIO/SYM/KANG, TWINGO



RN3308-300

RODAMIENTO EJE POSTERIOR 139 Ø77X42

DUSTER 4X4



RN3308-301

RODAMIENTO EJE POSTERIOR 162 Ø30X48

DUSTER 4X2



PG3308-100

RULIMAN EJE DEL 33*72x37

C-ELYSE, C2, C3, DS3, P207, P208



PG3308-130

RULIMAN EJE DEL 37*52x25mm

P106, P206, P309, XSARA



RN4404-090

MANZANA RUEDA DEL con Ruliman Incluido 29d

Kole, Xtrail, Qasq, Juke



RN4404-098

MANZANA RUEDA DEL (POST 4x4) 25d

DUSTER



RN4404-131

MANZANA RUEDA DEL 23d

LOGAN/SANDERO 10/15, MEGANE1



RN4404-101

MANZANA RUEDA DEL 21d

LOGAN/SANDERO 07/10, MEGANE1, CLIO2/SYM



RN4404-097

MANZANA RUEDA POST

DUSTER 4x2 2015>, LOGAN/SANDERO 20>

	RN4404-099	MANZANA RUEDA POST DUSTER 4x2 2008 al 2015
	RN4404-150	MANZANA RUEDA POST LOGAN/SANDERO 15/20
	RN4404-151	MANZANA RUEDA POST LOGAN/SANDERO 2007 al 2015
	RN3310-101	CRUCETA CARDAN 19x55.5 DUSTER 4x4
	CH3310-109	CRUCETA CARDAN 23.82x61.3 VITARA
	RN3302-100	SOPORTE CARDAN DUSTER 4x4
	CH3302-126	SOPORTE CARDAN Rod 45x19† 62092RS 173mm NHR , FVR
	CH3302-100	SOPORTE CARDAN Rod 28x16† 62/28-2RS PedBajo DMAX 3.5 v6 4x4 05/09, DMAX 3.0 v6 05/14, WINGLE
	CH3302-118	SOPORTE CARDAN Rod 30x16† 62282RS PedBajo DMAX 3.5 4x4, DMAX 3.0 4x4
	CH3302-112	SOPORTE CARDAN Rod 30x16† 6206RS Pedmedio LUV2800 4x4 02/05, LUV2300 4x4 88/02, LUV2200 4x4 98/06, TROOP/RODEO
	CH3302-111	SOPORTE CARDAN Rod 30x16† 6206RS Pedmedio LUV2800 4x4 02/05, LUV2300 4x4 88/02, LUV2200 4x4 98/06, TROOP/RODEO



MZ3302-109

SOPORTE CARDAN ROD Ø35 ±14 17d (3-7-7) HUECOS ABIERTOS

BT50 2.5 4x4 Diesel 00/15, RANGER 2.5 4x4 Diesel



MZ3302-108

SOPORTE CARDAN ROD Ø35 ±14 24d HUECOS ABIERTOS

BT50 2.5 4x4 Diesel 00/15, RANGER 2.5 4x4 Diesel



MZ3302-104

SOPORTE CARDAN ROD Ø28 ±16 LISO - HUECOS CERRADOS

B2600 4x4 08/14



MZ3302-102

SOPORTE CARDAN ROD Ø25 ±15 LISO - HUECOS CERRADOS

BT50 4x2, B2200, B2000



MZ3302-107

SOPORTE CARDAN ROD Ø35 ±14 24d HUECOS ABIERTOS

B-50 2.6 Gas 4x4, B2600 Gas 4x4 08/14, RANGER 2.6 4x4 08/14



MZ3302-100

SOPORTE CARDAN ROD Ø28 ±16 LISO - HUECOS ABIERTOS

B2600 4x4 99/08, B2200 87/08, B2000 87/922, RANGER XL 2.2 8v 4x2 99/07



TY3302-161

SOPORTE CARDAN Rod 30x13± 6006-2RS

HILUX 05/15



TY3302-111

SOPORTE CARDAN Rod 30x13± 6206RS ±60mm

HILUX 4x2/4x4 95/06, FORTUNER 09/15



TY3302-142

SOPORTE CARDAN Rod 30x16± 6206-2RS

HILUX 4x4 83/05, 4runner 87/02



TY3302-131

SOPORTE CARDAN Rod 30x16± 62062RS ±73mm

HILUX 4x2 83/05



TY3302-101

SOPORTE CARDAN Rod 30x16± 62062RS ±73mm

HILUX 4x2 83/05

	TY3302-191	SOPORTE CARDAN Rod 30x16† 6006-2RS COASTER, Stout
	AS3302-101	SOPORTE CARDAN Rod 30x16† 6006-2RS HAVAL, L200, MONTERO, NATIVA
	RN4409-202	RULIMAN AMORTIGUADOR DEL DUSTER 1.6, LOGAN/SANDERO, MEGANE1/SCEN1, CLIO2/SYM/KANG
	CH4409-205	RULIMAN AMORTIGUADOR DEL 11.5*65.5x38.1 GRAN VITARA SZ
	CH4409-202	RULIMAN AMORTIGUADOR DEL 12*44,5x14,6 OPTRA
	CH4409-201	RULIMAN AMORTIGUADOR DEL 12*44,5x14,6 OPTRA
	CH4409-213	RULIMAN AMORTIGUADOR DEL 15*45,5x16 AVEO, SAIL
	CH4409-212	RULIMAN AMORTIGUADOR DEL 15*45,5x16 AVEO, SAIL
	CH4409-223	RULIMAN AMORTIGUADOR DEL 11*41,2x14,2 SPARK GT, BEAT
	CH4409-221	RULIMAN AMORTIGUADOR DEL 10,5*49x18 SPARK, MATIZ
	CH4409-211	KIT RULIMAN AMORTIGUADOR 3,9*47x30 FORSA 2



KI4409-241

RULIMAN AMORTIGUADOR 9*51x18

RIO 11 > PICANTO 04/13